

Solo (Daisy)

classical guitar refretted
in Π -limit just intonation

Marguerite Brown

2021

Tuning

Solo (Daisy) is written for the the nylon string Daisy guitar refretted in Π -limit just intonation. The open strings and tuning system are listed below:

Daisy open strings: 6 = E 5 = B 4 = D 3 = F# 2 = B 1 = E

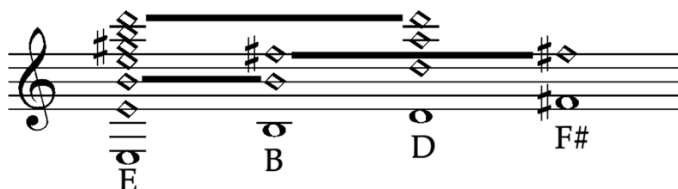
Pitch:	E	F	F#	G#	A	A#	B	C	*C#	D	D#	*Eb
Ratio:	1/1	12/11	9/8	5/4	21/16	15/11	3/2	18/11	27/16	7/4	15/8	21/11
Cents:		151	204	386	471	537	702	853	906	969	1088	1119

*C# 27/16: This pitch is not built into the refretting, but rather, only occurs as a harmonic (3rd partial) from the 9/8 F#.

*Eb 21/11: This pitch is built into the refretting but does not occur in *Solo (Daisy)*.

Tuning process:

- 1) Tune the E string (VI) to standard pitch.
- 2) Tune the B string (V) as a pure 3/2 perfect fifth above E – the 3rd partial of the E string and the 2nd partial of the B string should align and be beatless.
- 3) Tune the D string (IV) as a pure 7/4 minor 7th above E – the 7th partial of the E string and the 4th partial of the D string should align and be beatless.
- 4) Tune the F# string (III) as a pure 3/2 perfect fifth above B – the 3rd partial of the B string and the 2nd partial of the F# string should align and be beatless.



Performance Notes

All pitches should be held L.V. for as long as possible.

Strings are numbered low to high as roman numerals VI – I. Roman numerals indicate which string to use for any given pitch for the purpose of playing pitches across multiple strings as held chords.

Natural harmonics are notated with a diamond note head. Natural harmonics up to the 5th partial are denoted with a combination of Roman and Arabic numerals, which indicate the string number (Roman) and partial number (Arabic) for the given harmonic.

R.H. = use the right hand to pluck the last natural harmonic.

Solo (Daisy)

Marguerite Brown
2021

*slow to moderate,
delicately*

p - mp

rit.

moderately

mp *mf*

mp

accel.

*faster,
stronger*

mf

open string
bass notes
through m. 22

22 *f* *rit.*

a little faster than before

25 *mf - f*

28

30 *mp - mf*

33 *rit.*

slow to moderate, tenderly

35 *mp*

38 *rit.* R.H. II²